

# ***Nelson Lake Association***

## **FALL NEWSLETTER 2021**



### **2022 Upcoming Events**

#### **WINTER RAMA**

Saturday, January 8, 2022

Noon — 4:00 P.M.

at Nelson Lake Landing

#### **ANNUAL PICNIC**

Saturday, August 13, 2022

4:00 P.M. — 7:00 P.M.

at Nelson Lake Park

#### **ANNUAL MEETING**

Saturday, June 11, 2022

9:00 A.M. — Noon

at Hayward Veterans Center



Mark Your  
Calendar





*The purpose of the Association is to preserve and protect Nelson Lake and its surroundings, to enhance the water quality, fishery, boating safety, and aesthetic values of Nelson Lake as a public recreational facility for today and for future generations while respecting the interests of property owners and the public and to provide the opportunity for fellowship among Association members.*

[www.nelsonlakeassociation.org](http://www.nelsonlakeassociation.org)  
Nelson Lake Association is a 501(c)3 Non-profit Organization



# From the President

Rick Lindner



## Drawdown Effect On Walleye Recruitment

On September 20th DNR Fisheries, with assistance by the Great Lakes Indian Fish & Wildlife Commission, conducted an electro-fishing survey of Nelson Lake to determine if the drawdown helped the natural walleye reproduction in the spring of this year. Together they used 5 boats to survey the entire 31 miles of shoreline on the lake in one night. The primary objective of the survey was to measure the year class strength of walleye born in spring 2021. They also looked for any 1 year-old walleye from spring 2020. Those walleye were less than 12 inches in length at this stage of their life.

The initial observation was no improvement. Max Walter (DNR Fisheries biologist) reported that his boat found ZERO walleyes from the natural hatch this spring or a year ago. They did find a few large walleye (17-18 inches). They also found bass and all other species but no small walleye, even though they were in one of the prime shoreline areas on the lake. Data is still being combined and analyzed so look for more information in the Spring Newsletter, and if possible a presentation at the Annual Meeting in June.

## Walleye Stocking

This year the DNR stocked another 27,000+ extended growth walleye into Nelson Lake. Multiple drop sites were used, as in 2019, to take advantage of the distribution of forage fish throughout the lake and increase survival rate. The stocked fingerlings were 6-8 inches long.

## Water Clarity Changes

You may have observed better water clarity this summer. The water clarity changes began last summer. We saw much clearer water than normal in the fall, and it has continued this summer. About 10 years ago we also saw a cycle of clearer water for a few years. I have not seen any research that defines the cause on Nelson Lake but it may be somewhat due to Bryozoans, the jelly-like blobs seen attached to docks and lifts when removed from the water in the fall. They consume algae. Go to this web site for more information about Bryozoans.

<https://www.fountains2go.com/what-are-the-jelly-like-blobs-under-my-dock>

(Right click on link and click on "open in new window" to view link.)

Volunteers measure water clarity at 3 specific locations on the lake every 8 days (weather permitting) and report the data to the DNR. Normally the Secchi disk readings are about 4-5ft. This year we have seen readings of 7ft most of the summer. The good thing is, this year we have not seen the extreme algae bloom that occurred August 1st-10th a few years ago.

(continued on next page)

## From the President (continued)

### Drawdown Effect On Weed Growth

In many areas of the lake the weed growth was reduced by about 50%. But in other areas there was little effect on weed growth. It all depended on the type of weeds present in the water and whether the lake bottom was exposed during the winter. The natural Milfoil varieties present in Nelson Lake were significantly reduced and dead plants could be seen on the bottom. Other varieties seem to have been stunted but the roots survived in areas that were below the ice level and the weeds returned later in the summer.

The changes in weed patterns had a significant effect on Bass fishing. Dead weeds caused the Bass to avoid the weed beds they inhabited in previous years so they were much harder to find. As a result you may have noticed far fewer fishing tournaments on the lake this year. I observed two, or possibly three, weekends with heavy boat traffic from fishing tournaments, where last summer there was a tournament almost every weekend.



## From the Treasurer Glenn Rolloff



### Financials as of September 24, 2021

General Fund	\$26,710.96
Fish & Wildlife	\$ 8,693.11
Lake Project	\$ 1,718.10
Invasive Species	\$ 5,020.21
Nelson Lake Park	<u>\$ 2,907.62</u>
<b>TOTAL</b>	<u><u>\$45,050.00</u></u>

### NLA MEMBERSHIP

NLA Membership  
stands at  
**248 members**



# NLA Board Members



Rick Lindner  
President



Harold Burton  
Vice President



Glenn Rolloff  
Treasurer



Steve Bilitz  
Secretary



Gordy Christians



Tom LeMay



John Welter



Mike Hallum



Dale McPherson



Jeff Hanson



Casey Stangl



Mark Schaezner

Rick Lindner	President	715-634-4290
Harold Burton	Vice President	715-634-2909
Steve Bilitz	Secretary	715-634-2553
Glenn Rolloff	Treasurer	715-497-6193
Gordy Christians	Director at Large	715-634-3156
Tom LeMay	Director at Large	715-634-2594
John Welter	Director at Large	715-634-4175
Mike Hallum	Director at Large	715-797-0903
Dale McPherson	Director at Large	612-210-4449
Jeff Hanson	Director at Large	612-719-9072
Casey Stangl	Director at Large	715-699-1213
Mark Schaezner	Director at Large	612-860-9064



# Annual Meeting Summary

The NLA Annual Meeting was conducted on Saturday, June 12, 2021 at the Veterans Center from 9am to noon. The meeting was attended by 75 members. It began with a presentation by **Gordy Christians** describing the drawdown activities and accomplishments at the boat landings during the drawdown.

**Jeff Hanson** presented the status of the Weed Watcher program and pointed out some sectors needing volunteers (see article in this newsletter).

**The Keynote presentation was by Jim Onerheim** in which he demonstrated Hands-Only CPR and the use of AEDs. This summer the AED previously located at 4-Seasons Resort was moved to the Park Island Resort, as the status of 4-Seasons Resort is unknown with a new owner.

**Nominations and Elections** to the Board of Directors were held. The following positions were up for re-election:

Rick Lindner, President

Jeff Hanson, Director at Large

Mark Schaenzer, Director at Large

Mike Hallum, Director at Large

All four were re-elected.

## **Board Member Changes**

At the Annual Meeting, Cara Goldman announced her desire to resign from the Treasurer position. She has been the Treasurer since 2017. We appreciate her four years of excellent service on the board, and her willingness to continue on the board until the transition to a new Treasurer is completed. Thank you Cara!

**Glenn Rolloff** volunteered to assume the role as NLA Treasurer and was approved by the Board of Directors at a Special Meeting on August 30, 2021. Welcome Glenn! We look forward to working with you.

## **Door Prizes**

Two \$25 certificate Door Prizes, redeemable at any resort, on Nelson Lake were won by Jim Hammar and Matt Dietrich.



# Volunteers Needed

## Monitoring for Aquatic Invasive Plants

Early detection often means the difference between eradication and ongoing maintenance to reduce the damage aquatic invasive species cause once they are established. Being able to quickly determine that a species has shown up in a new area can also help focus containment efforts and reduce the risk to nearby waters. We rely heavily on our association member volunteers.

Freshwater aquatic invasive plants are those that are not naturally found in local lakes. Because they are not native, they have no predators or diseases, which allows them to grow quickly and dominate freshwater systems and native plants, fish and aquatic insects already present. Aquatic invasive plants can lead to reduced shorefront property values, water quality impairments and problems with the aesthetic and recreational values of waterbodies. Exotic plants can create the following problems:

- Displacing of beneficial wildlife.
- Reducing the aesthetic quality of lakes.
- Littering of beaches with plant fragments.
- Creating difficult or dangerous swimming areas
- Snagging fish lines and stunting fish life.
- Becoming tangled in outboard motor propellers.
- Choking boat traffic lanes.
- Requiring substantial funds for managing.

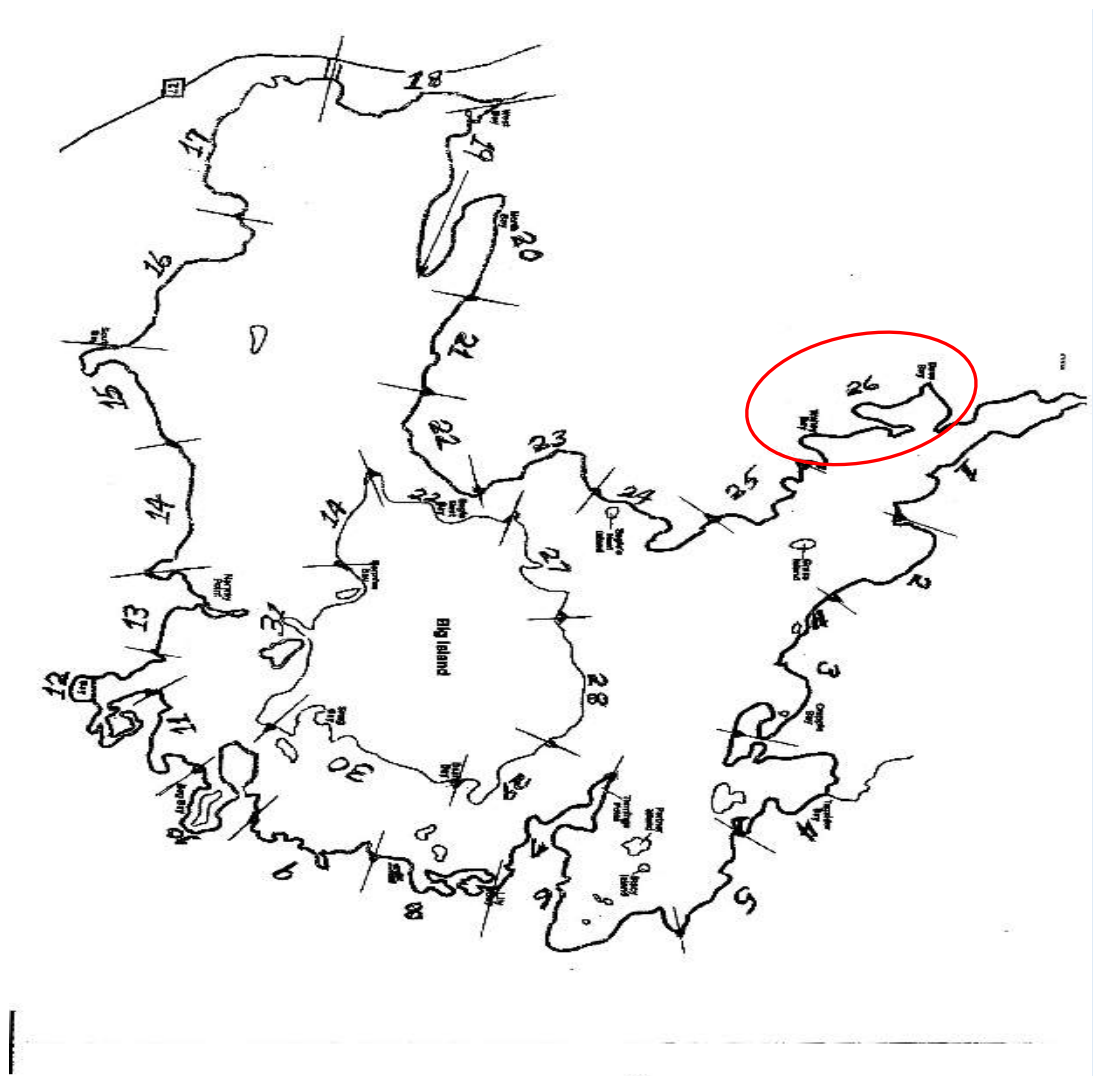
The spread of these plants to other uninfected waterbodies often occurs by transient boat traffic. If accidentally introduced into a waterbody, they grow at explosive rates, some between an inch to as many as six inches a day! Many times, new infestations are not discovered until the plants become a nuisance requiring expensive control methods. Once fully established, they are virtually impossible to eradicate. Therefore, education, vigilance and early detection are key components in keeping these non-native nuisance plants in check. Nelson Lake has a volunteer program dedicated to monitoring the lake for the presence of aquatic invasive plants. Volunteers are given a special "Aquatic Invasive Species Guidance Document" which contains photographs of exotic plants and look-alike plants that are actually OK. (continued on next page)

## Monitoring for Aquatic Invasive Plants (continued)

The lake has been divided up into 31 sections. There are currently 24 households monitoring these sections. Weed monitoring involves is a small amount of time during the summer months. Volunteers survey their waterbody two times from May through September. Primarily we are looking for Curly Leaf Pondweed in June and Eurasian Water Milfoil in August. To survey, volunteers slowly boat around their assigned section. Using the materials provided in the Guidance Document, volunteers will then look for any species of concern. After a trip or two around the waterbody, volunteers will have a good knowledge of its plant community and will immediately notice even the subtlest changes.

We would really like to have more volunteers to assist with this monitoring. We have included a map of the lake showing the sections. The section that we currently could use help monitoring is section 26. **If you are interested in helping please contact Jeff Hanson at 612-719-9072.**

Thanks.



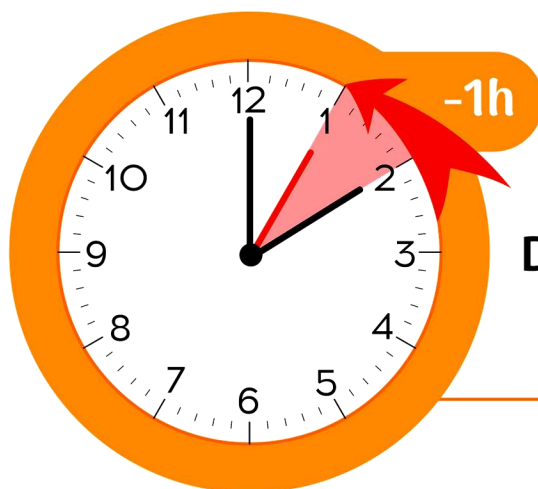
# NLA Environmental Scholarship 2021 Awarded

**Soile Doyle** is this years recipient of our NLA scholarship. She graduated from Hayward Community High School. Soile was active in many school activities including National Honors Society, Family Career and Community Leaders of America, softball, hockey, and cross country running. Besides being active in these groups she won many awards in these activities.



This fall Soile plans to attend the University of Wisconsin at Stevens Point and major in either forestry or environmental science. Her parents are Dion and Dawn Doyle. The scholarship is awarded during the second semester of the freshman year once the student provides grade transcripts showing a GPA of 2.0 or higher in the first semester, and is enrolled in the same studies during the second semester. This years scholarship is for \$1,000. Congrats Soile! Wishing you much success!

---



REMINDER...

**FALL BACK**

**Daylight Saving Time Ends  
November 7, 2021**

# Annual Picnic



This year the picnic was moved to the Nelson Lake Park for the first time since the park was upgraded two years ago. The facility worked well. The new pavilion provided adequate space for all the food service and picnic tables inside the shelter. We also set up the large tent with additional tables so everyone could be under a shelter. The picnic was attended by 103 people.

Due to COVID-19 concerns, the NLA Board of Directors approved a motion to have all food catered instead of a potluck as we did in the past. It worked out well with one exception — the potatoes were delivered a little too early and didn't stay hot until the end of the food service line. Next year we will try to improve on food arrival times.

Catering was provided by Tall Pines Resort and Lynn's Catering. Tall pines provided roast beef, pulled pork BBQ, buns for sandwiches, coleslaw and beans. Lynn's provided the cheesy potatoes, fruit salad, cookies, and brownies. We also received a tray of cookies donated by Don Johnson Chevrolet dealership. We appreciate the donation and admire your commitment to our community activities. *Thank you!*

# Annual Picnic

**MINNOW RACES:** The Minnow Race was again a popular activity this year. The two winners were awarded a new spinning rod combo. We also had our youngest minnow race participant — ELIANA! She was so excited about the minnows and being able to participate in the race. Eliana is the granddaughter of Mark and Susan Schaezner.



Cade Welter



Andrew Swanson



1st minnow  
race for  
*Eliana*

**RAFFLE WINNERS:** Marty Gall and Steve Peters won the raffle this year. They each received a paddleboard and paddle. Enjoy guys!!

NELSON LAKE ASSOCIATION #083  
HAYWARD WISCONSIN RAFFLE 2021  
PADDLEBOARD & PADDLE  
Name: Steve Peters  
Address: \_\_\_\_\_  
City/State: \_\_\_\_\_

NELSON LAKE ASSOCIATION #062  
HAYWARD WISCONSIN RAFFLE 2021  
PADDLEBOARD & PADDLE  
Name: MARTY GALL  
Address: \_\_\_\_\_  
City/State: \_\_\_\_\_



Rick presented Steve Peters with his paddleboard. Congrats!

\* Marty Gall was not present at the picnic so we were unable to get a

# Perfect for Kayaking! Day



Seven Kayaks ventured out to kayak around the Big Island. In photo: Sara, John & Mark Schaezner; Brittany Russell; Mary & Doug Dannen, and Paula Bilitz

Not in photo:  
Cathy & Dave Yohnk

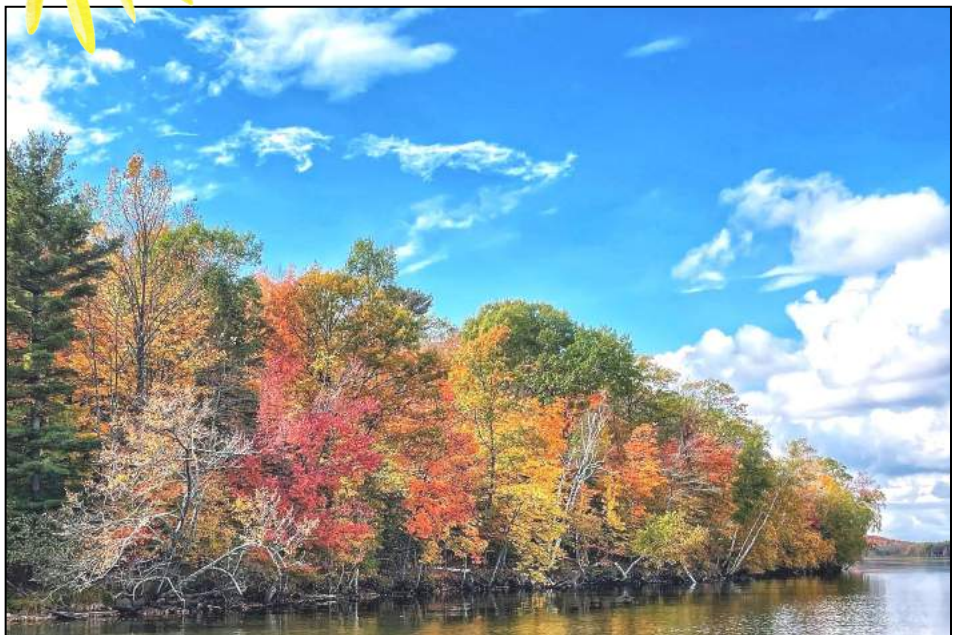
There were nine paddlers that completed the “official” Kayak Around The Island. The age of the paddlers spanned six decades. In addition to the “official” paddlers there were reports of others who could not attend the official event who were inspired to do it virtually. There was a wide range of kayaks used, most were sit-in kayaks, there was one sit-on kayak, a tandem kayak and a custom-made kayak.

It was a perfect summer day for the event, temps in the 70’s, and a light wind. With the waves from boat traffic the first section of the course, from Gerlach Landing to Norway Point was the most challenging. Once we turned the corner and went through Eagle Pass the water was smooth and perfect for kayaking. The last section of the course from Tanning Point to Gerlach Landing was a nice paddle with the inspiration of completing the course.

# Summer Photos



# Summer Photos



**HAYWARD, WI**

J-Ts  
**LAWN & CABIN CARE**

Jerry Gamache 715-607-1030  
Tami Majewski 715-607-0177  
JTsLawnandCabinCare.com



*A Cut Above The Rest*



Hayward, Wisconsin

**OPEN YEAR ROUND**



**MIKE & ANGIE DORENSKI**  
15366W REISKE ROAD  
HAYWARD, WI 54843  
PHONE # (715) 634-4567

RESTAURANT-BAR & CABIN RENTALS  
A FULL MENU  
SPECIALS INCL.-FISH FRY, CHICKEN AND RIBS

WWW.NELSONLAKERESORT.COM/TALLPINESRESORT@CHARTER.NET

**Nelson Lake Landing**  
Motel, Cabins, RV Sites,  
Bar, Restaurant

13045 N. Dam Road  
Hayward, WI 54843  
Phone: 715-634-4175

OPEN YEAR ROUND!  
*7 miles north of Hayward on Hwy. 27*  
[www.nelsonlake.net/NLLanding](http://www.nelsonlake.net/NLLanding)




**NORTHERN LAKES COOPERATIVE**

Cabin Stop • Bakery • Thrifty White Co-op Pharmacy  
• Do it Best • gadgets • Auto Center • Feed Mill • Dirty Dog Grooming  
• Cenex • Corner Deli • Energy Center

**SCOTT'S SEPTIC PUMPING**

OWNER: SCOTT POPPE  
12841N Hwy 63 • Hayward, WI 54843  
715-634-1450 or 715-699-7279  
[scottsseptic@cheqnet.net](mailto:scottsseptic@cheqnet.net)

Commercial and Residential  
Septic Tanks • Holding Tanks  
Dry Wells • Grease Traps  
Car Wash Basins • Risers • Steaming  
Tank Inspections • Portable Toilet Rentals  
Handicap Units & Sinks Available

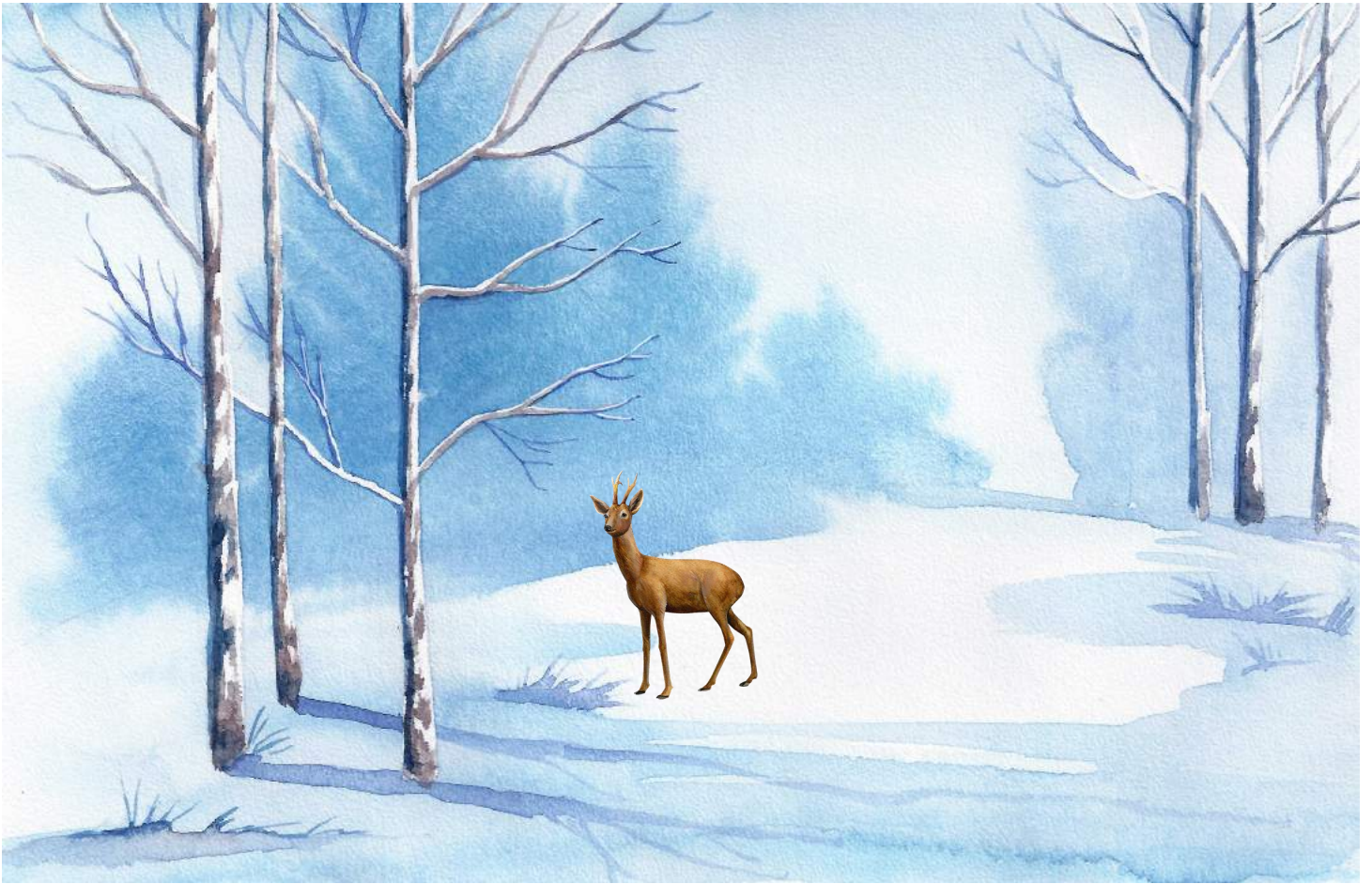


**"I TAKE CRAP FROM EVERYONE"**



**THANK YOU FOR YOUR CONTINUED SUPPORT**





**WISHING EVERYONE A  
BEAUTIFUL FALL & WINTER  
SEASON!**

